



**BRITISH  
HOT TUBS**

**INSTALL PREPARATION &  
ELECTRICAL GUIDE**



## TABLE OF CONTENTS

- 4 Base Preparation
- 6 Access
- 8-9 Electrical Requirements
- 10 Considerations





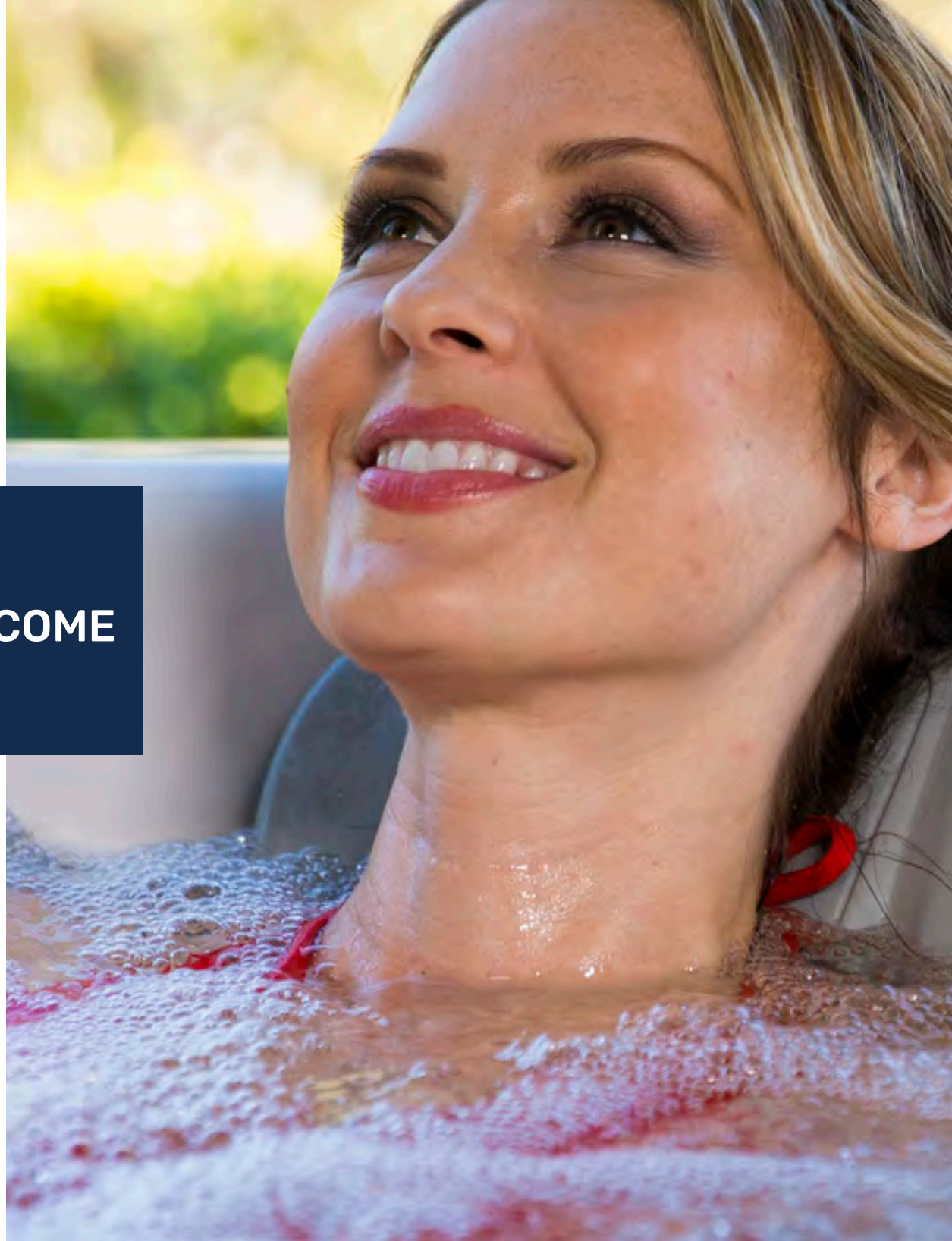
**Congratulations** on choosing a hot tub from our *proudly designed in the UK* British Hot Tubs range.

Our range is especially adapted for the variable British climate and offers excellent energy efficiency, performance, innovation and beautiful designs - ultimately enabling you to enjoy your hot tub experience without worrying about high electrical costs and tedious water management.

#### **OUR COMMITMENT TO YOU**

We are passionate about hydrotherapy and the life-changing benefits of owning a hot tub. We are dedicated to making a difference in how your body heals, how you interact with loved ones and ensuring that we make a lasting impact in your life by providing the best quality product - a hot tub to be proud of.

**WELCOME**



# BASE PREPARATION

## Hot Tub Base

Your new hot tub will need a firm, level base to be positioned on concrete, patio, and a well-supported decking area are common examples. The ground should be as level as possible, but a small difference in level for water drainage is acceptable.

## Positioning Of The Hot tub

The final location for your hot tub is personal preference and can be discussed with your installers on the day of installation to get the positioning just right.

If you are having a cover lifter installed to your hot tub, at least 460mm would be needed at the back, and 200mm either side to allow this to open without obstruction.

Access may be required around the hot tub for maintenance, it is recommended to leave at least 500mm clearance around the hot tub for access to all panels, or provisions for this access to be created should it be needed. This is particularly important if you are sinking your hot tub.

## WE CAN DO THAT

Our Landscaping Team offer base works and landscaping design. We can also provide all the information and advice needed should you wish to sink or semi-sink your hot tub or swim spa. Please contact our team for more information on this.









# ACCESS

Usually, your hot tub will be transported into your garden **on its side**, using a 'Spa Dolly' or 'Spa Sled'. An additional 6cm width, and 20cm height would be needed on top of the spa measurements to allow for the hot tub to be transported into your garden safely without damage.

Please take into consideration guttering, drain/soil pipes, outdoor taps, gas meter boxes, etc. when measuring, and ensure that there are no tight turns that would need to be manoeuvred around.

Our install team can safely move the hot tub over many surfaces, including lawn or gravel.

## **Narrow Access?**

Where access is narrow, we have a number of solutions such as crane lift to get your new hot tub into your desired location. If you believe you may have issues with access, please get in touch with our Service Team who will be able to help organise a crane survey and lift for you if needed.

Please note, the cost of a crane lift is not included within the delivery and installation charge.



## HOT TUB ACCESS WIDTH GUIDE

HOT TUB MODEL	ACCESS WIDTH NEEDED	ACCESS HEIGHT NEEDED	HOT TUB SERIES
Westwood	91 CM	197 CM	PATIO
Shakespeare	92 CM	215 CM	PATIO
Mercury	92 CM	170 CM	PATIO
Winston	98 CM	233 CM	PATIO
Spencer	92 CM	215 CM	PATIO
Kensington	93 CM	221 CM	PRIME
Sandringham	98 CM	211 CM	PRIME
Balmoral	98 CM	227 CM	PRIME
Windsor	98 CM	227 CM	PRIME
Empire	99 CM	254 CM	PREMIUM
Sterling	99 CM	254 CM	PREMIUM
Union	99 CM	254 CM	PREMIUM
Britannia	101 CM	254 CM	PREMIUM

## WE CAN HELP

Our Hot Tub Landscaping team offer a no obligation Hot Tub Home survey. When taking advantage of this service you'll be able to discuss access, installation and any other questions you have.



# ELECTRICAL REQUIREMENTS

## 16 AMP ELECTRICAL REQUIREMENTS

Our Patio Hot Tub range can be operated on a 16amp supply, rather than a dedicated 32amp circuit. This means that your electrician can spur off from an existing circuit, often saving costs.

A suitable 16amp switch or isolator would need to be situated in close range of the hot tub, with adequate cable left from the isolator ready for our installation team to connect.

The hot tub does not come with any cable, so would need to be provided on the day of installation.

Please note, using a 16amp supply to power the Patio range of hot tubs would mean that the heater would turn off when the high-speed pumps are in operation. If a 32amp supply is used to power the hot tub, the heater and pumps will both be able to operate together.

## 32 AMP ELECTRICAL REQUIREMENTS

All hot tubs in our Prime and Premium range require a 32-amp supply. It is also possible for our Patio range to be supplied by a 32-amp circuit if preferred.

The electrical supply for your new hot tub will need to be installed by a qualified electrician. This must be a dedicated supply, and not include anything else on the circuit. The circuit will need to be protected by a Residual Current Device (RCD).

For 32amp hot tubs, the circuit must include a suitable isolator situated in close range of the hot tub, with adequate cable left from the isolator ready for our installation team to connect. A 32amp rotary isolator, or Commando socket and plug are options that could be used as your isolator.





The type and size of the cable used will vary depending on the installation. The length of the cable needed, and how the cable gets from the fuse board to your hot tub (buried, clipped to the wall, etc.) will affect this.

**Typically, a 6mm SWA or SY cable can be used, however, a qualified electrician should decide on the type and size of cable used.**

### HOT TUB ELECTRICAL GUIDE

HOT TUB MODEL	POWER NEEDED
Westwood	16 AMP   32 AMP
Shakespeare	16 AMP   32 AMP
Mercury	16 AMP   32 AMP
Winston	16 AMP   32 AMP
Spencer	16 AMP   32 AMP
Kensington	32 AMP
Sandringham	32 AMP
Immersed Jet Chambers	32 AMP
Balmoral	32 AMP
Windsor	32 AMP
Empire	32 AMP
Sterling	32 AMP
Union	32 AMP
Britannia	32 AMP

#### **IMPORTANT!**

No extension leads should be used at any point in the circuit  
Hot tubs do not come with any cable or plugs  
Our team can only connect into the hot tub – not the plug, isolator, etc..



# OTHER THINGS TO CONSIDER

## **FILLING YOUR HOT TUB**

You will need a hosepipe to fill your new hot tub. This will need to be fed from a cold water source.

## **PRIVACY**

Consider your privacy when deciding where to locate your Hot Tub. You might even think about creating a covered corner by adding to your hot tub purchase a cabin, gazebo or cover.



## **SINKING YOUR HOT TUB**

You may wish to sink your hot tub or swim spa. Access and drainage must be considered when doing this. For maintenance, 500mm would be needed around the spa to be able to remove the panels and access the components. There would need to be adequate drainage installed to ensure the recess does not fill with rainwater.





## PEACE OF MIND PLAN

Award Leisure offer an excellent aftercare package.

Our plan offers our customers peace of mind should they have any technical issues with their hot tub.

An engineers will attend to fix your Hot Tub without any labour or call-out charge for the duration of the agreement.

You will also receive a free annual service if there are no more than 2 Call Outs through each year. (normal service price is £399)

The peace of mind service plan offers all year round benefits **including a 10% discount on all chemicals, parts and accessories, monthly exclusive offers and a free gift** for every year you are on the plan.





[www.britishhottubs.co.uk](http://www.britishhottubs.co.uk)